

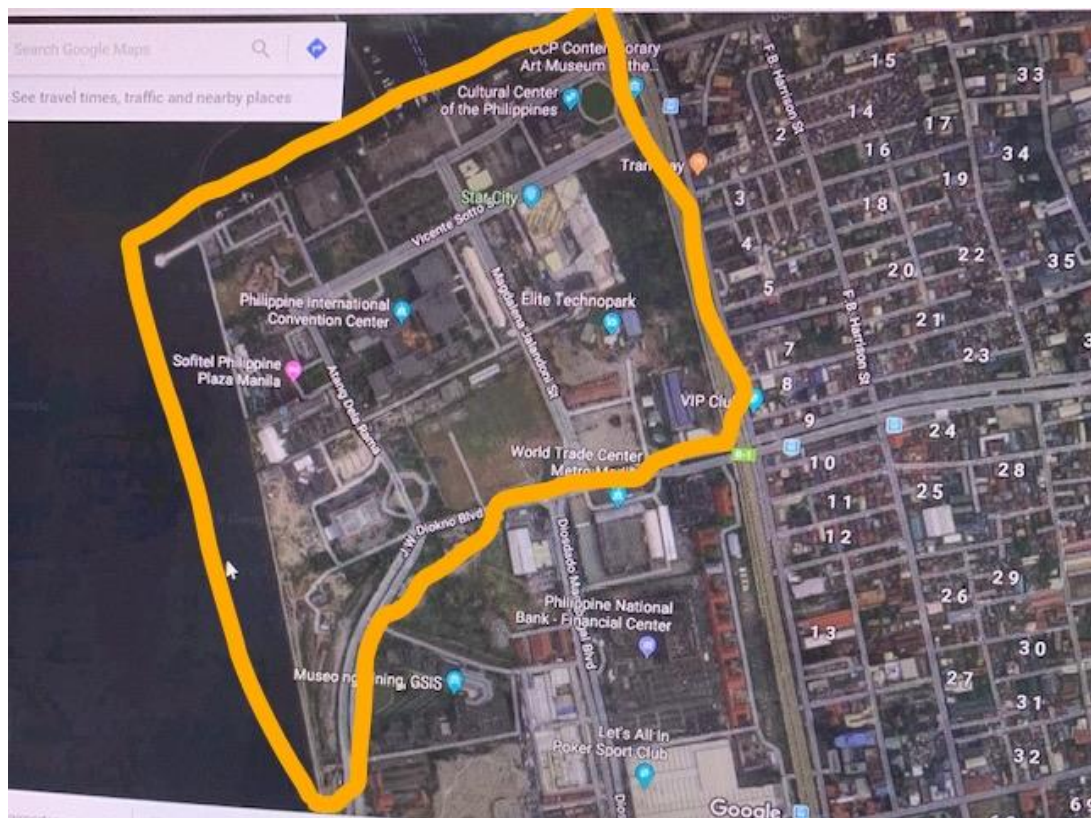
LOGISTICAL NOTE

7th GBEP Bioenergy Week in Manila, Philippines

June 25-27, 2019

I. Venue – Philippine International Convention Center (PICC)

The PICC is the host of various international and local events in the Philippines, and is within the Cultural Center of the Philippines (CCP) Complex located in Pasay City. It is a government facility designed as an events arena, composed of five building modules. Currently, some government offices are also housed at PICC. PICC is near the SM Mall of Asia (MOA), which is the 4th biggest shopping mall in the Philippines located at the Bay area alongside the seafood restaurants. It is near the Philippine Senate and the Government Service Insurance System Complex. The nearest 5-star hotel to PICC is Sofitel Philippine Plaza Hotel, which is just a walking distance away.

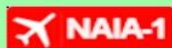


II. International Airports in Manila, Philippines

Manila is the capital city of the Philippines. Even if the city of destination and location of the airports are not actually in Manila City, the airport tags of luggage is **MNL**, which means **Manila**. Ninoy Aquino International Airport (or **NAIA**) is the acronym used for the airport terminals with accompanying terminal number. There are three main international airports in Manila – **Terminal 1 (T1) or NAIA 1**, **Terminal 2 (T2) or NAIA 2** and **Terminal 3 (T3) or NAIA 3**. **Terminal 4 (T4) or NAIA 4** caters to domestic flights only.

Manila Airport Terminal Names

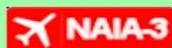
Manila Airport (MNL) is composed of 4 active terminals and a general aviation section. They are all referenced as NAIA an acronym standing for **Ninoy Aquino International Airport**



The International terminal is also known as **Terminal 1** or NAIA-1. Most of the foreign airlines operate from this terminal.



The PAL Terminal (Philippine Airlines) is known as NAIA-2 or "**Centennial**" and has a domestic and an international section exclusively used by Philippine Airlines.



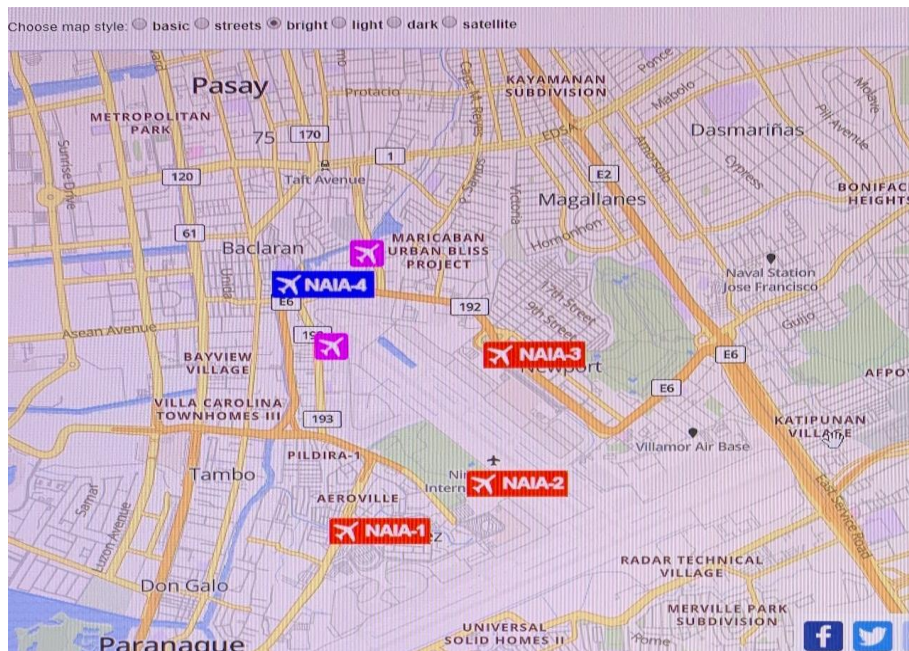
Terminal 3, NAIA-3, is operational since August 1, 2008. This terminal has a domestic and an international section and is still under construction. Cebu Pacific Air had been the first airline to move in. They were followed by PALexpress and some PAL flights. Recently some foreign carriers also moved to this terminal.



Domestic Terminal

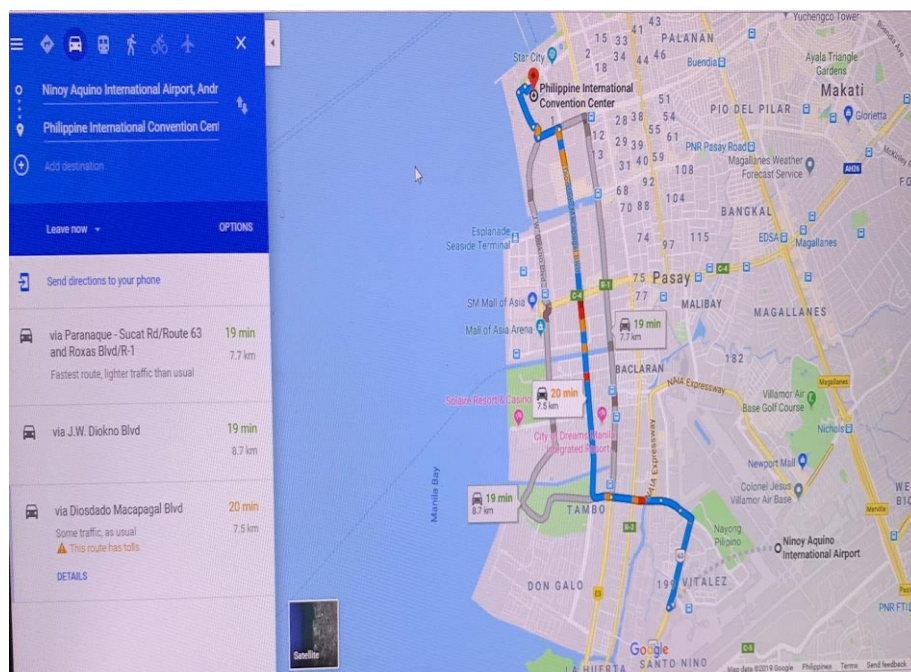
NAIA-4 is again known as the "**Domestic Terminal**". After a short time with international flights it accommodates now all flights with small propeller aircraft from Cebu Pacific Air, PALexpress, Air Asia and some other small airlines.

Loop of NAIA Terminals located along the border of Pasay City and Parañaque City



III. Directions from the International Airports / NAIA terminals to PICC

There are three major routes from NAIA terminals to PICC, as shown in the map below. The most advisable route is the one via J. W. Diokno Boulevard.



IV. Transportation

The Sugar Regulatory Administration (SRA), the Department of Energy (DOE) and the Ethanol Producers Association of the Philippines (EPAP) will arrange for the transportation of all foreign participants, speakers and the GBEP Secretariat from the airport to their designated hotels, and from the hotels to PICC and vice versa. The Philippine Secretariat will gather the dates and time of arrivals and departures of all foreign guests.

Here are some information on means of transportation at the NAIA:

At the NAIA terminals, there are a couple of options regarding taxi transportation: **Coupon Taxi** (colored white with blue squares) and **Yellow Taxi** (colored yellow). The **white taxi** works by charging a **specific amount according to the distance** of the final destination, while **the yellow taxis** are normal **metered taxis**.

To take a **Coupon Taxi (white taxi)** you need to approach the dispatch station available at any of the airport terminals, state your destination and you will be given a coupon, which marks the price you will need to pay to get to your final destination. Please **keep your coupon** during the entire trip and do not hand it over to the driver until you reach your final destination.

This is the best option for travelling in a group and in case of carrying large luggage, as you may ask for a large taxi (up to eight passengers) without being surcharged.

Metered Taxis (Yellow taxi) are, on average, 50% more expensive than the taxis around Metro Manila, but they are the only metered taxi companies allowed in the airport premises. In case the driver refuses to turn on the meter, board another taxi.

Grab taxi counters or booths are also available at the NAIA terminals. You may ask the airport guards or personnel on the location of Grab taxi booths. Just note that "Uber" taxi is no longer operating in the Philippines.

V. Hotels

Name	Contact	Price USD / PHP	Website
Sofitel Philippine Plaza Manila *****	CCP Complex, Roxas Boulevard, Pasay, 1300 Manila E-mail: H6308@sofitel.com Phone: +63 2 573 5555	From 110–340 USD per night From 5840–17740 PHP per night	https://www.sofitelmanila.com/
Conrad Manila *****	Seaside Boulevard, Coral Way, Pasay, 1300 Metro Manila Email: customer support Phone: +63 2 833 9999	From 160–660 USD per night From 8300–34500 PHP per night	https://conradhotels3.hilton.com
Microtel by Wyndham - Mall of Asia, Manila ***	Coral Way Ave. corner Seaside Boulevard, SM Mall of Asia Complex, Pasay, 1308 Metro Manila Email: mallofasia@microtel.ph Phone: +63 2 403 3333	From 65–150 USD per night From 3400–7950 PHP per night	https://www.microtel-manila.com
Hotel 101 Manila ***	EDSA Extension, Mall of Asia Complex, Pasay, 1300 Metro Manila Email: reservations.manila@hotel101.com.ph Phone: +63 2 553 1111	From 60–80 USD per night From 3200–4200 PHP per night	https://hotel101manila.com.ph/

Sofitel Philippine Plaza Hotel is the nearest 5-star hotel to PICC with a wholesome environment for hiking and walking.

Another 5-star hotel near PICC is Conrad Hotel which is about 2.5 km away from PICC but near the SM Mall of Asia and the Bay area.

The recommended affordable hotels, which are a few kilometers from PICC but near the SM Mall of Asia, are Microtel by Wyndham Mall of Asia and Hotel 101. Other hotels are also available around the PICC and Mall of Asia vicinities which the foreign guests may prefer to stay.

VI. Mall of Asia

In the vicinity of the Mall of Asia are restaurants, hotels, bay area and amusements, as shown in the maps below:

